

PIERCE VILLAGE-FOUR BEDROOM

Pierce Village

Fort Campbell, KY

Ranks E1-E5	Square Feet 1,100-1,600	ADA Home No
Bedrooms 4	Bathrooms 2.5	Parking Garage

Community Information

Pierce Village consists of 630 three, four, and five bedroom two-story duplex homes. This neighborhood is located in the Gate 7 area near the Campbell Army Airfield. The community office is located at 4600 Morgan Road, and the phone number is 931.431.2730.

Residents of Campbell Crossing enjoy:

- 24/7 Dependable Maintenance Service
- Electric, Water and Garbage Service Included
- Renter's Insurance
- Lawn Maintenance
- Monthly Community Events

Pierce Village is a part of the Pierce Community which features playgrounds, parks, and much more.



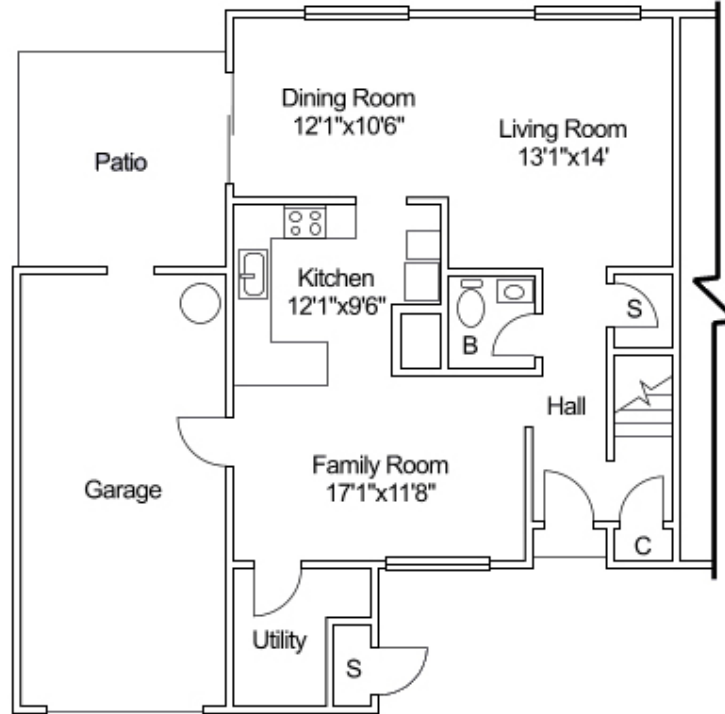
CampbellCROSSING

A Lend Lease Community

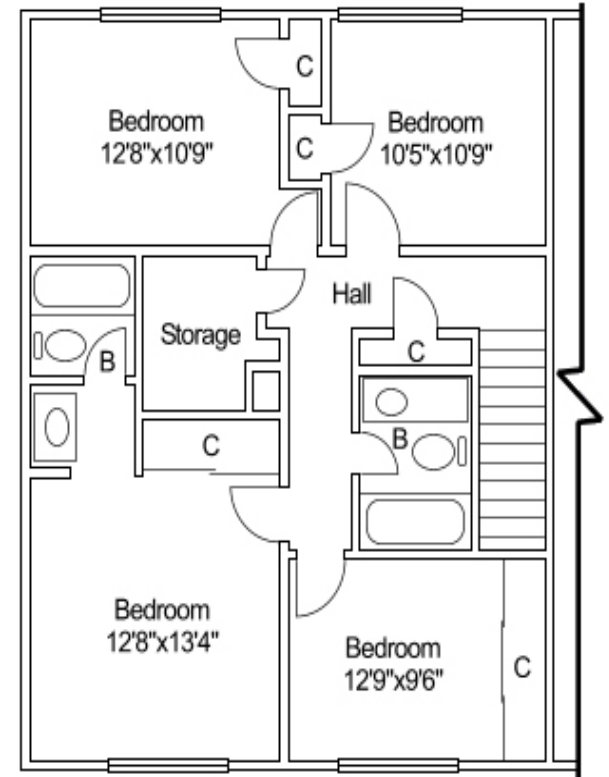
Bldg 850 Georgia Ave.
Fort Campbell, KY 42223
931-431-9003
931-431-2765

Information provided is for illustrative purposes only and may vary from actual home. Dimensions, drawings, configurations, or other data are approximate and subject to change without notice.

First Floor



Second Floor



931-431-9003
www.campbellcrossingllc.com

Simplified Living

RICH IN

History

