

# LEE PARK-FOUR BEDROOM

**LEE PARK** Fort Campbell, KY

Ranks <b>E6-E8</b>	Square Feet <b>1,888-2,158</b>	ADA Home <b>No</b>
Bedrooms <b>4</b>	Bathrooms <b>2.5</b>	Parking <b>Garage</b>

## Community Information

These homes feature plenty of space! These four bedroom homes feature an attached garage and a six-foot privacy fence in the back yard. These homes also feature all Energy Star rated appliances. Very close to wonderful schools and gate six.

Residents of Campbell Crossing enjoy:

- 24/7 Dependable Maintenance Service
- Electric, Water and Garbage Service Included
- Renter's Insurance
- Lawn Maintenance
- Monthly Community Events

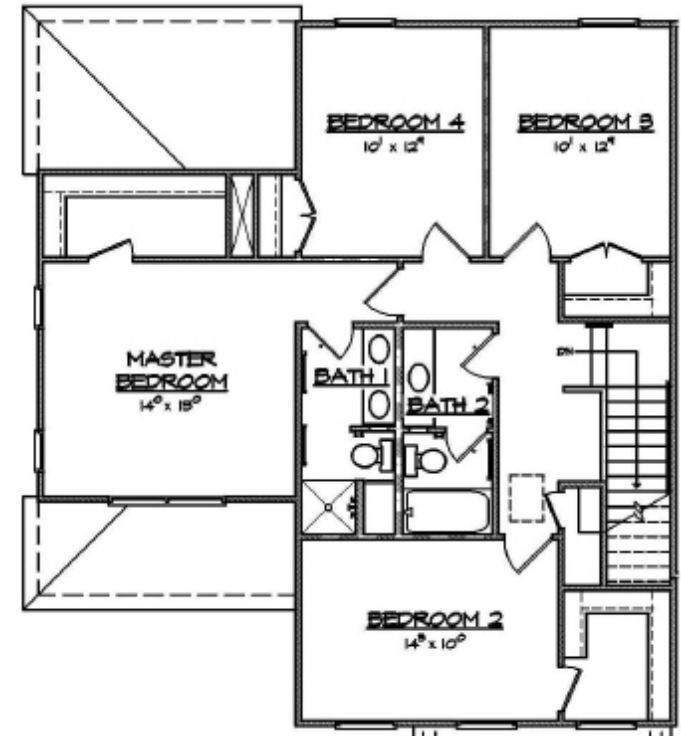
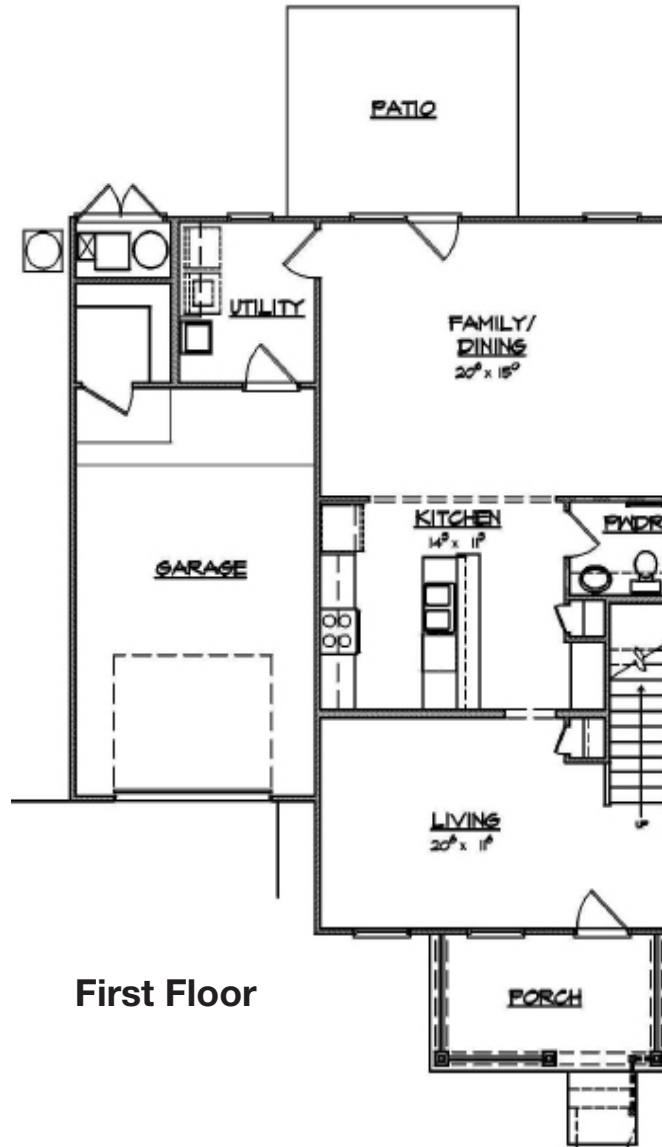
The Lee Park neighborhood is a part of the Lee Community which features playgrounds, parks, Community Center, and much more!



**CampbellCROSSING**  
A Lend Lease Community

Bldg 850 Georgia Ave.  
Fort Campbell, KY 42223  
931-431-9003  
931-431-2765 (FAX)

Information provided is for illustrative purposes only and may vary from actual home. Dimensions, drawings, configurations, or other data are approximate and subject to change without notice.



931-431-9003  
www.campbellcrossingllc.com

Simplified Living

RICH IN

*History*

