

# LEE PARK-THREE BEDROOM

## LEE Park Fort Campbell, KY

Ranks <b>E6-E8</b>	Square Feet <b>1,899-1,941</b>	ADA Home <b>No</b>
Bedrooms <b>3</b>	Bathrooms <b>2.5</b>	Parking <b>Garage</b>

### Community Information

These homes feature plenty of space! These three and four bedroom homes feature an attached garage and a six-foot privacy fence in the back yard. These homes also feature all Energy Star rated appliance. Very close to wonderful schools and gate six.

Residents of Campbell Crossing enjoy:

- 24/7 Dependable Maintenance Service
- Electric, Water and Garbage Service Included
- Renter's Insurance
- Lawn Maintenance
- Monthly Community Events

The Lee Park neighborhood is a part of the Lee Community which features playgrounds, parks, Community Center, and much more!

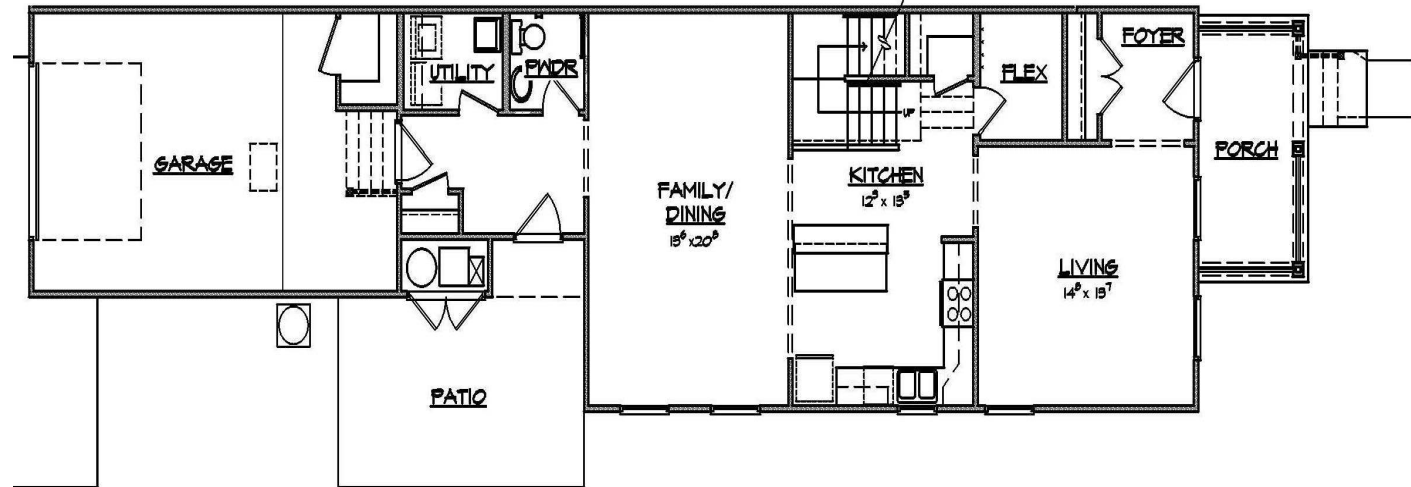


**CampbellCROSSING**  
A Lend Lease Community

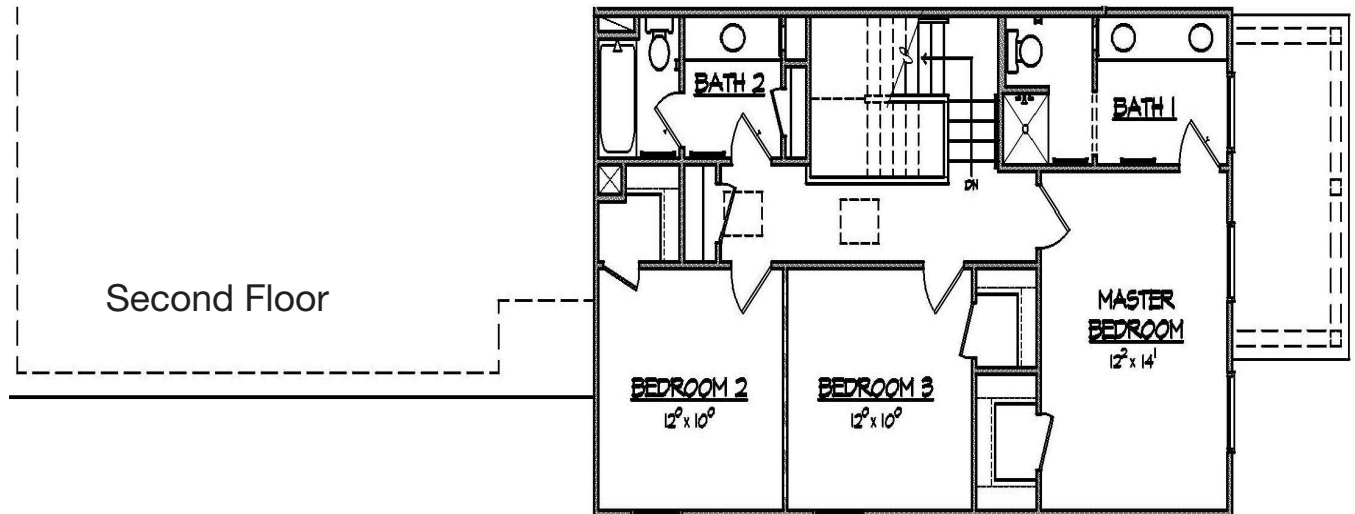
Bldg 850 Georgia Ave.  
Fort Campbell, KY 42223  
931-431-9003  
931-431-2765 (FAX)

Information provided is for illustrative purposes only and may vary from actual home. Dimensions, drawings, configurations, or other data are approximate and subject to change without notice.

First Floor



Second Floor



Simplified Living

RICH IN

*History*

931-431-9003  
www.campbellcrossingllc.com

